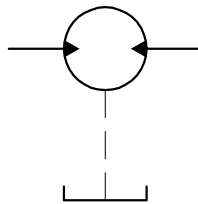


Symbol



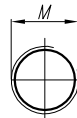
drain connection  
( $P_{\text{drain}} < 0,5 \text{ bar}$ )  
(Always connect directly  
to the tank)

I - variants

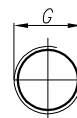
Variants:

- ...X563M - for M ports (see the picture I and the table below);
- ...X563G - for G ports (see the picture I and the table below);
- ...X563U - for U ports (see the picture I and the table below).

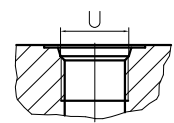
Variant M



Variant G



Variant U (SAEJ475 (ISO R725))



Type	Displacement $q$ , [cm <sup>3</sup> ]	Pressure $P_{\text{max}}$ , [bar]	Speed $n$ , [min <sup>-1</sup> ]	Dimensions									
				A mm	B mm	Inlet			Outlet				
						M mm	G mm	U mm	M mm	G mm	U mm		
10MR1,6X563...	1,6	210	750...3500	40,3	83,6±0,1	M16x1,5	G3/8-A	3/4-16UNF-2B	M16x1,5	G3/8-A	3/4-16UNF-2B		
10MR2X563...	2	210	750...3500	41,1	85,2±0,1								
10MR2,5X563...	2,5	210	750...3500	42,1	87,2±0,1								
10MR2,65X563...	2,65	210	750...3500	42,4	87,7±0,1	M20x1,5	G1/2-A		3/4-16UNF-2B	M20x1,5		G1/2-A	3/4-16UNF-2B
10MR3,15X563...	3,15	210	750...3500	43,5	89,8±0,1								
10MR3,65X563...	3,65	210	750...3500	44,4	91,9±0,1								
10MR4,2X563...	4,2	210	750...3500	45,5	94,1±0,1	M22x1,5	7/8-14UNF-2B	7/8-14UNF-2B		M22x1,5	7/8-14UNF-2B	7/8-14UNF-2B	
10MR4,7X563...	4,7	210	750...3500	46,05	96±0,1								
10MR5X563...	5	210	750...3500	47,1	97,2±0,1								
10MR5,7X563...	5,7	200	750...3000	48,5	100,1±0,1	M22x1,5	7/8-14UNF-2B		7/8-14UNF-2B	M22x1,5	7/8-14UNF-2B		7/8-14UNF-2B
10MR6,1X563...	6,1	200	750...3000	49,4	101,8±0,1								
10MR7,4X563...	7,4	180	750...2500	52,1	107,2±0,1								
10MR8X563...	8	150	750...2500	53,4	109,7±0,1	M22x1,5	7/8-14UNF-2B	7/8-14UNF-2B		M22x1,5	7/8-14UNF-2B	7/8-14UNF-2B	
10MR8,5X563...	8,5	150	750...2500	54,4	111,7±0,1								
10MR9,8X563...	9,8	120	750...2000	57	117±0,1								